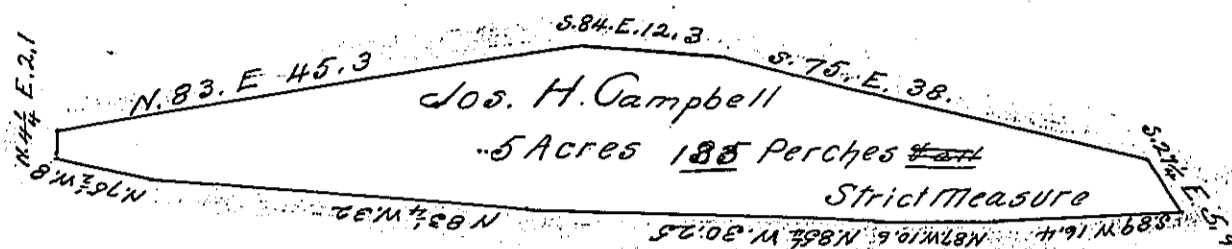


Up the North Branch the Susquehanna River



Draft of an Island situate in the North Branch of the River
 Susquehanna near a large Island belonging to Jacob Reed
 & about in the centre of the river and probably in both Mahoning
 township Montour County & Rush township Northumberland
 County. Surveyed March 21st 1866 by virtue of a warrant to
 Jos. H. Campbell dated March 19th 1866 Containing five acres &
 133 ^{measure} ~~88~~ Perches strict ~~allowance of 6 per Cent~~ ~~to~~

Geo. W. West C.S. Montour County
 To James P. Barr Esq. Surveyor General Philip Frederick C.S. Northth County

IN TESTIMONY that the above is a copy of the original remaining on file in
 the Department of Internal Affairs of Pennsylvania, made
 conformably to an Act of Assembly approved the 16th day of
 February, 1833, I have hereunto set my Hand and caused
 the Seal of said Department to be affixed at Harrisburg,
 this twenty-eighth day of June 1904

Isaac B. Brown
 Secretary of Internal Affairs.